

## Valvole ed elettrovalvole Serie E

5/2 vie monostabile/bistabile 5/3 C.C. C.A. C.P.

Utilizzi sul corpo

Montaggio singolo o su convogliatori

Passo 10,5 - 16 - 19 mm

Le valvole e le elettrovalvole della Serie E sono state studiate per garantire grandi portate in spazi ridotti. Sono disponibili in tre differenti grandezze per l'impiego singolo o in batteria. Sui convogliatori è possibile connettere l'entrata, i due scarichi e gli scarichi dei pilotaggi, oltre ad un connettore elettrico multipolare completo di cavi già cablati per il collegamento dei solenoidi.

Convogliatori: Passo 10,5 E521-10\*\*

Passo 16 E531-10\*\*

Passo 19 E551-10\*\*

vedi pag 2.06.047

Accessori vedi pag 2.06.047



### CARATTERISTICHE GENERALI

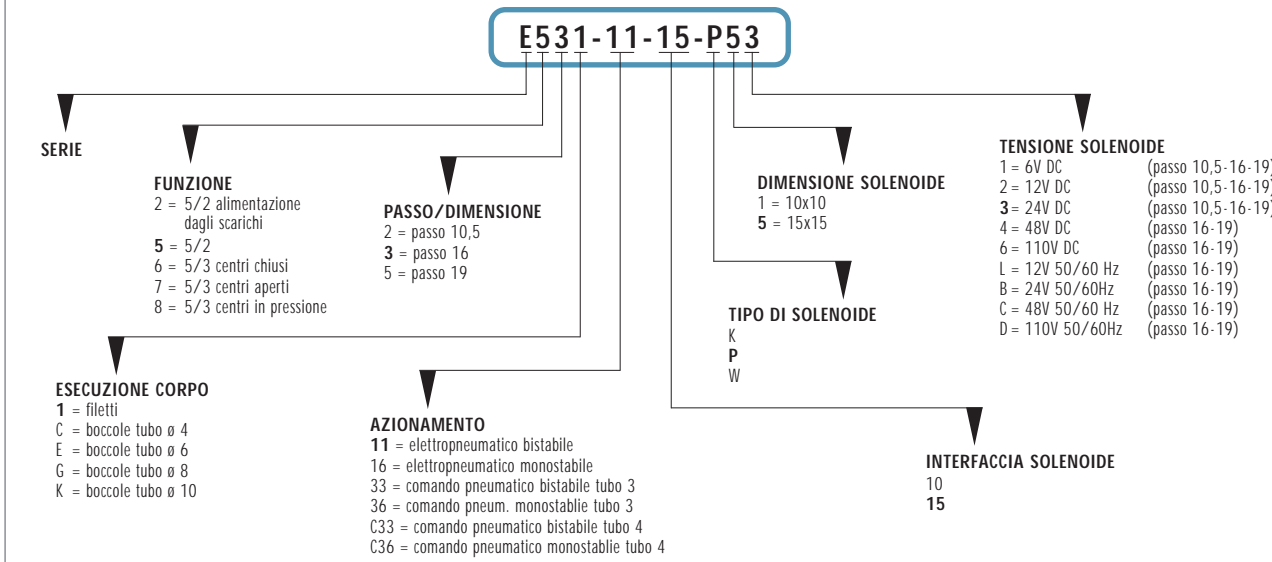
Costruzione		a spola bilanciata
Funzioni valvola		vie / pos. 5/2 e 5/3
Materiali		corpo, spola, basi AL; fondelli tecnopolimero, guarnizioni NBR Poliuretano
Attacchi		M5, G1/8, G1/4, tubo 4
Temperatura	ambiente	0°C min. + 50° C max
	fluido	
Fluido		aria filtrata (5 micron o inferiore), senza lubrificazione*

\* nel caso si utilizzasse aria lubrificata, si consiglia olio ISOVG32 e di non interrompere mai la lubrificazione.

**CARATTERISTICHE ELETTRICHE**

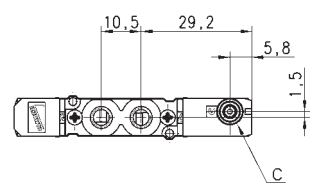
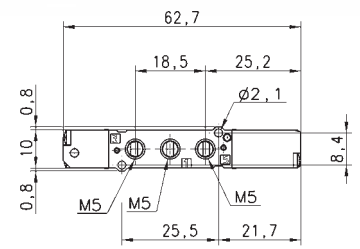
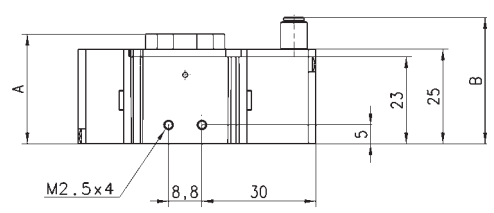
Tensioni	vedi codifica
Tolleranza sulla tensione	± 10%
Assorbimento	2W, 1W
Classe d'isolamento	classe F
Grado di protezione	IP65 con connettore DIN 40050 passo 10,5 IP50

**ESEMPIO DI CODIFICA**



**Valvola a comando pneumatico monostabile - passo 10,5**

5/2 vie.  
 N.B.: La pressione di pilotaggio non deve mai essere inferiore alla pressione di esercizio.



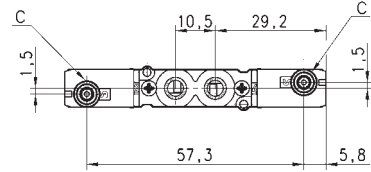
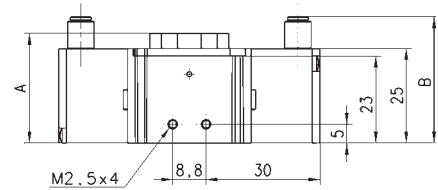
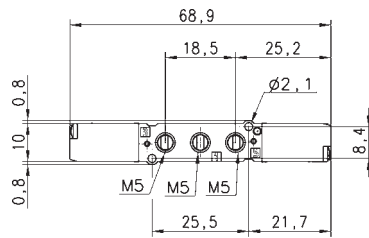
**INGOMBRI**

Simbolo	Mod.	A	B	C	Attacchi		P. min pilotaggio bar	P. es. bar	Portata NI/min
					1-3-5	2-4			
	<b>E521-36</b>	29	33,4	Ø3	M5	M5	2,5	2,5/7	200
	<b>E52C-36</b>	37,5	33,4	Ø3	M5	Ø4	2,5	2,5/7	200
	<b>E521-C36</b>	29	39,1	Ø4	M5	M5	2,5	2,5/7	200
	<b>E52C-C36</b>	37,5	39,1	Ø4	M5	Ø4	2,5	2,5/7	200

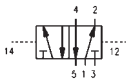
La ditta si riserva la facoltà di variare modelli e ingombri senza preavviso. Prodotti destinati all'industria, è vietata la vendita al pubblico.

**Valvola a comando pneumatico bistabile - passo 10,5**

5/2 vie.



**INGOMBRI**

Simbolo	Mod.	A	B	C	Attacchi		P. min pilotaggio bar	P. es. bar	Portata NI/min
					1-3-5	2-4			
	E521-33	29	33,4	Ø3	M5	M5	1	-0,9/7	200
	E52C-33	37,5	33,4	Ø3	M5	Ø4	1	-0,9/7	200
	E521-C33	29	39,1	Ø4	M5	M5	1	-0,9/7	200
	E52C-C33	37,5	39,1	Ø4	M5	Ø4	1	-0,9/7	200

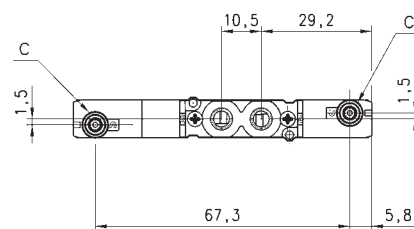
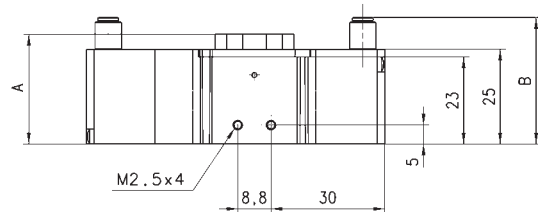
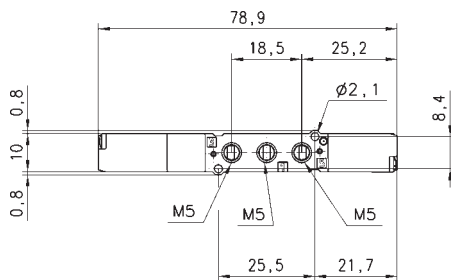
**Valvola a comando pneumatico - passo 10,5**

5/3 vie,


C.C. = Centri chiusi

C.A. = Centri aperti

C.P. = Centri in pressione



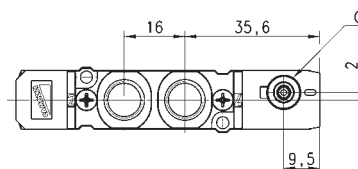
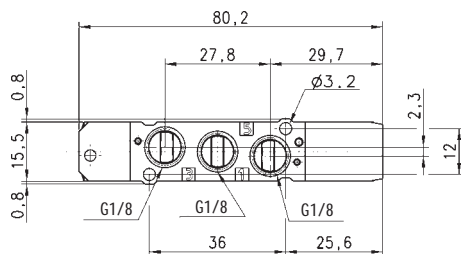
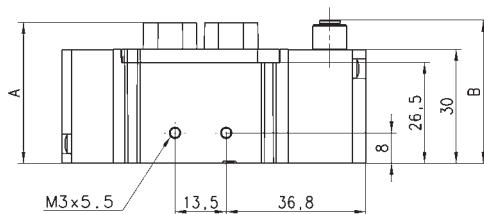
**INGOMBRI**

Simbolo	Mod.	A	B	C	Attacchi		P. min pilotaggio bar	P. es. bar	Portata NI/min		
					1-3-5	2-4					
	E621-33	E721-33	E821-33	29	33,4	Ø3	M5	M5	1	-0,9/7	200
	E62C-33	E72C-33	E82C-33	37,5	33,4	Ø3	M5	Ø4	1	-0,9/7	200
	E621-C33	E721-C33	E821-C33	29	39,1	Ø4	M5	M5	1	-0,9/7	200
	E62C-C33	E72C-C33	E82C-C33	37,5	39,1	Ø4	M5	Ø4	1	-0,9/7	200

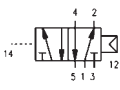
**Valvola a comando pneumatico monostabile - passo 16**

5/2 vie.

**N.B.:** La pressione di pilotaggio non deve mai essere inferiore alla pressione di esercizio.

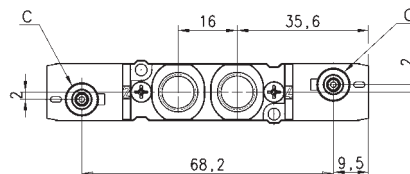
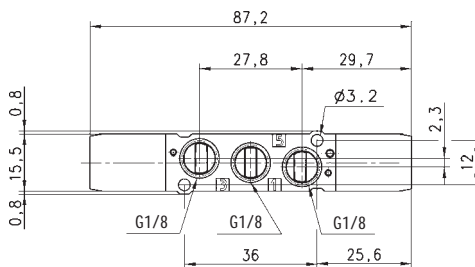
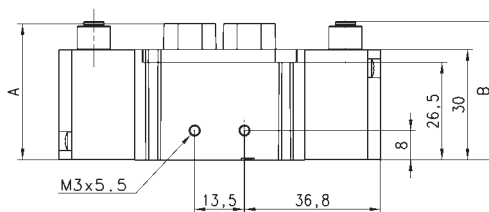


**INGOMBRI**

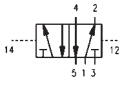
Simbolo	Mod.	A	B	C	Attacchi		P. min pilotaggio bar	P. es. bar	Portata NI/min
					1-3-5	2-4			
	<b>E531-36</b>	37	37,6	Ø3	G1/8	G1/8	2,5	2,5/7	550
	<b>E53E-36</b>	43,5	37,6	Ø3	G1/8	Ø6	2,5	2,5/7	550
	<b>E53G-C36</b>	45	37,6	Ø3	G1/8	Ø8	2,5	2,5/7	550
	<b>E531-C36</b>	37	41,6	Ø4	G1/8	G1/8	2,5	2,5/7	550
	<b>E53E-C36</b>	43,5	41,6	Ø4	G1/8	Ø6	2,5	2,5/7	550
	<b>E53G-C36</b>	45	41,6	Ø4	G1/8	Ø8	2,5	2,5/7	550

**Valvola a comando pneumatico bistabile - passo 16**

5/2 vie.

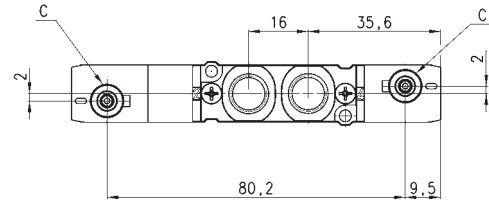
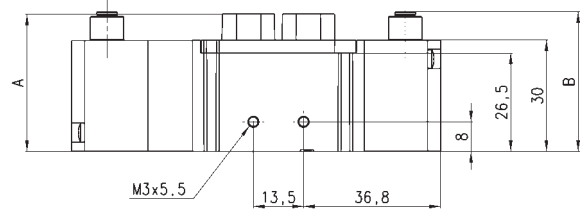
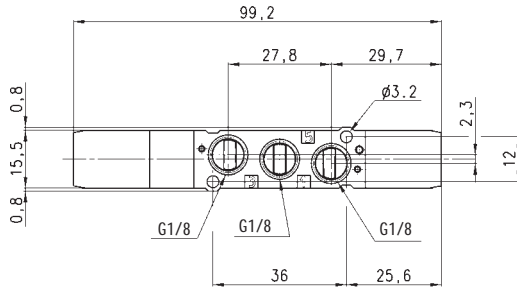


**INGOMBRI**

Simbolo	Mod.	A	B	C	Attacchi		P. min pilotaggio bar	P. es. bar	Portata NI/min
					1-3-5	2-4			
	<b>E531-33</b>	37	37,6	Ø3	G1/8	G1/8	2	-0,9/7	550
	<b>E53E-33</b>	43,5	37,6	Ø3	G1/8	Ø6	2	-0,9/7	550
	<b>E53G-33</b>	45	37,6	Ø3	G1/8	Ø8	2	-0,9/7	550
	<b>E531-C33</b>	37	41,6	Ø4	G1/8	G1/8	2	-0,9/7	550
	<b>E53E-C33</b>	43,5	41,6	Ø4	G1/8	Ø6	2	-0,9/7	550
	<b>E53G-C336</b>	45	41,6	Ø4	G1/8	Ø8	2	-0,9/7	550

**Valvola a comando pneumatico - passo 16**

5/3 vie,  
C.C. = Centri chiusi  
C.A. = Centri aperti  
C.P. = Centri in pressione



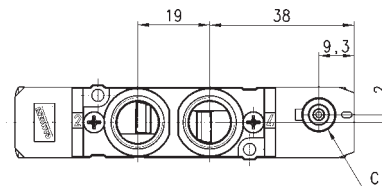
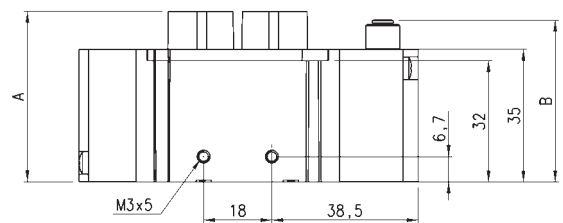
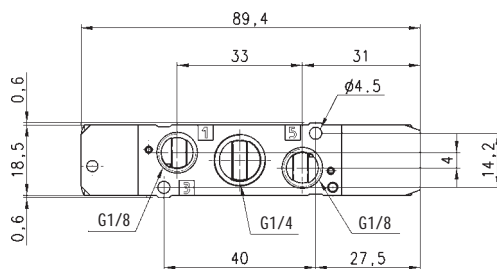
**INGOMBRI**

			A	B	C	Attacchi		P. min pilotaggio	P. es.	Portata
						1-3-5	2-4	bar	bar	NI/min
E631-33	E731-33	E831-33	37	37,6	Ø3	G1/8	G1/8	3	-0,9/7	550
E63E-33	E73E-33	E83E-33	43,5	37,6	Ø3	G1/8	Ø6	3	-0,9/7	550
E63G-C33	E73G-C33	E83G-C33	45	37,6	Ø3	G1/8	Ø8	3	-0,9/7	550
E631-C33	E731-C33	E831-C33	37	41,6	Ø4	G1/8	G1/8	3	-0,9/7	550
E63E-C33	E73E-C33	E83E-C33	43,5	41,6	Ø4	G1/8	Ø6	3	-0,9/7	550
E63G-C33	E72G-C33	E83G-C33	45	41,6	Ø4	G1/8	Ø8	3	-0,9/7	550

**Valvola a comando pneumatico monostabile - passo 19**

5/2 vie.

N.B.: La pressione di pilotaggio non deve mai essere inferiore alla pressione di esercizio.

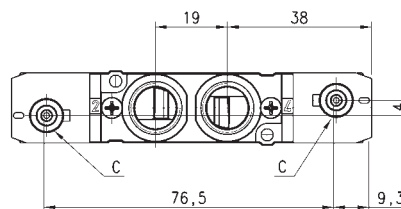
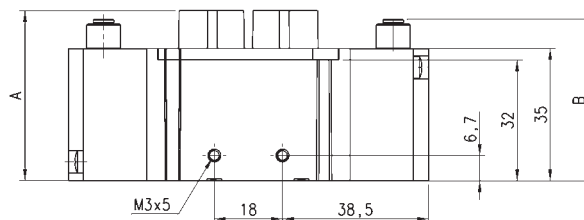
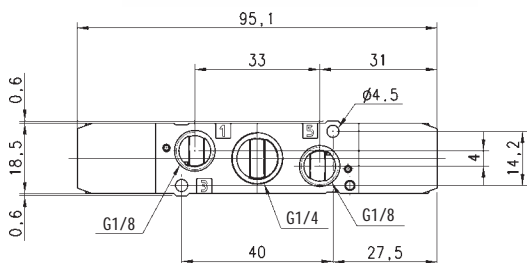


**INGOMBRI**

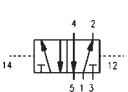
Simbolo	Mod.	A	B	C	Attacchi			P. min pilotaggio	P. es.	Portata
					1	3-5	2-4			
	E551-36	45	42,7	Ø3	G1/4	G1/8	G1/4	2	1/7	920
	E55K-36	53	42,7	Ø3	G1/4	G1/8	Ø10	2	1/7	920
	E551-C36	45	46,7	Ø4	G1/4	G1/8	G1/4	2	1/7	920
	E55K-C36	53	46,7	Ø4	G1/4	G1/8	Ø10	2	1/7	920

**Valvola a comando pneumatico bistabile - passo 19**

5/2 vie.



**INGOMBRI**

Simbolo	Mod.	A	B	C	Attacchi			P. min pilotaggio bar	P. es. bar	Portata NI/min
					1	3-5	2-4			
	<b>E551-33</b>	45	42,7	Ø3	G1/4	G1/8	G1/4	1	-0,9/7	920
	<b>E55K-33</b>	53	42,7	Ø3	G1/4	G1/8	Ø10	1	-0,9/7	920
	<b>E551-C33</b>	45	46,7	Ø4	G1/4	G1/8	G1/4	1	-0,9/7	920
	<b>E55K-C33</b>	53	46,7	Ø4	G1/4	G1/8	Ø10	1	-0,9/7	920

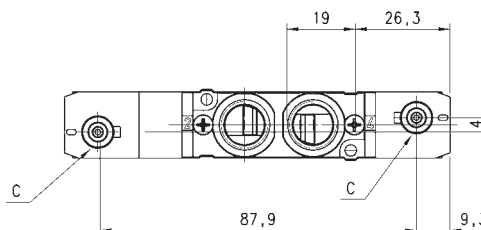
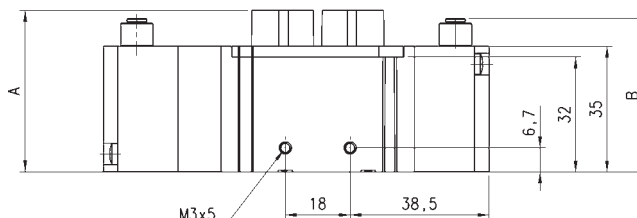
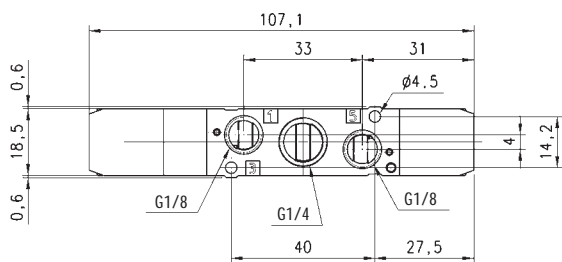
**Valvola a comando pneumatico - passo 19**

5/3 vie,



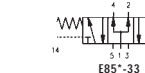
C.C. = Centri chiusi

C.A. = Centri aperti

C.P. = Centri in pressione

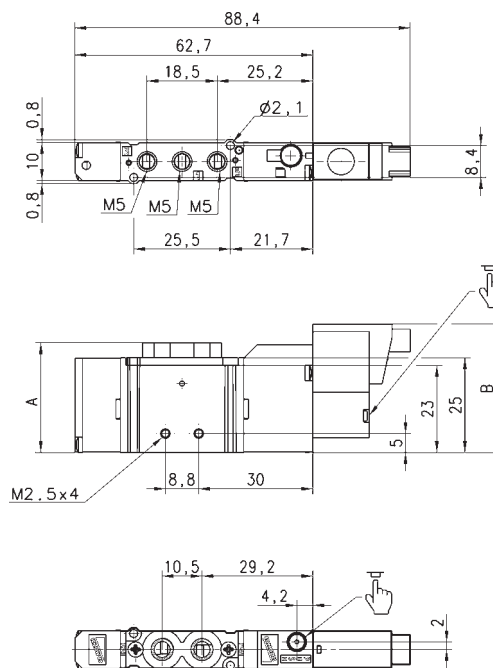


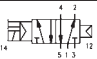
**INGOMBRI**

Simbolo	Mod.	A	B	C	Attacchi			P. min pilotaggio bar	P. es. bar	Portata NI/min	
					1	3-5	2-4				
											
<b>E651-33</b>	<b>E751-33</b>	<b>E851-33</b>	45	42,7	Ø3	G1/4	G1/8	G1/4	2	-0,9/7	920
<b>E65K-33</b>	<b>E75K-33</b>	<b>E85K-33</b>	53	42,7	Ø3	G1/4	G1/8	Ø10	2	-0,9/7	920
<b>E651-C33</b>	<b>E751-C33</b>	<b>E851-C33</b>	45	46,7	Ø4	G1/4	G1/8	G1/4	2	-0,9/7	920
<b>E65K-C33</b>	<b>E75K-C33</b>	<b>E85K-C33</b>	53	46,7	Ø4	G1/4	G1/8	Ø10	2	-0,9/7	920

**Valvola a comando elettropneumatico monostabile - passo 10,5**

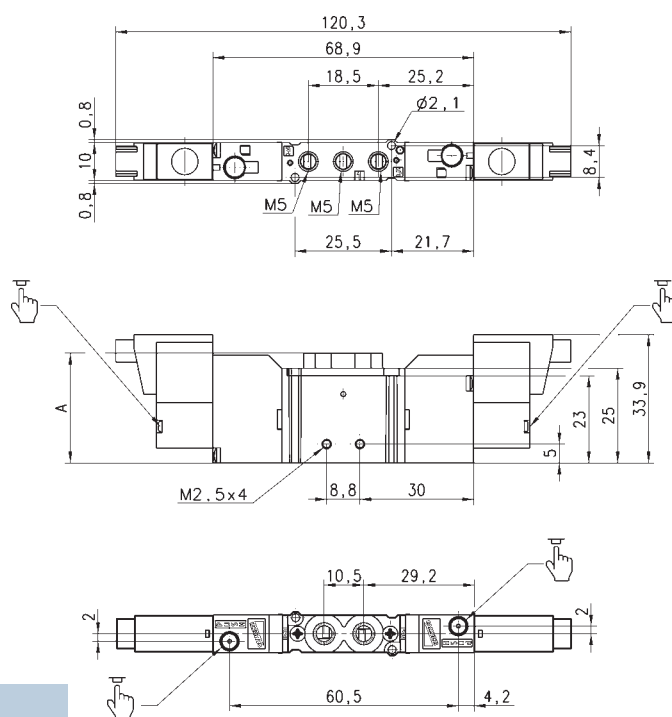
5/2 vie.


Per elettrovavole con solenoide tipo K utilizzare connettore 121-800  
vedi pag 2.01.005**INGOMBRI**

Simbolo	Mod.	A	Attacchi 1-3-5 2-4	P. es. bar	Portata NI/min
	<b>E521-16-10-K10</b>	29	M5 M5	2/7	200
	<b>E52C-16-10-K10</b>	37,5	M5 $\varnothing 4$	2/7	200

**Valvola a comando elettropneumatico bistabile - passo 10,5**

5/2 vie.

Per elettrovavole con solenoide tipo K utilizzare connettore 121-800  
vedi pag 2.01.005**INGOMBRI**

Simbolo	Mod.	A	Attacchi 1-3-5 2-4	P. es. bar	Portata NI/min
	<b>E521-11-10-K10</b>	29	M5 M5	1/7	200
	<b>E52C-11-10-K10</b>	37,5	M5 $\varnothing 4$	1/7	200

**Valvola a comando elettropneumatico - passo 10,5**

5/2 vie,

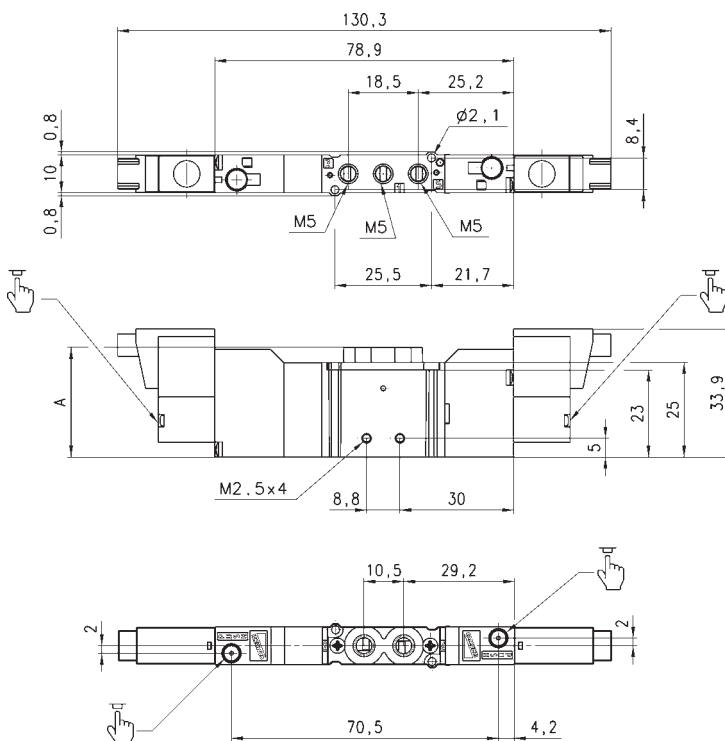
C.C. = Centri chiusi

C.A. = Centri aperti


C.P. = Centri in pressione

Per elettrovavole con solenoide tipo K utilizzare connettore 121-800

vedi pag 2.01.005



**INGOMBRI**

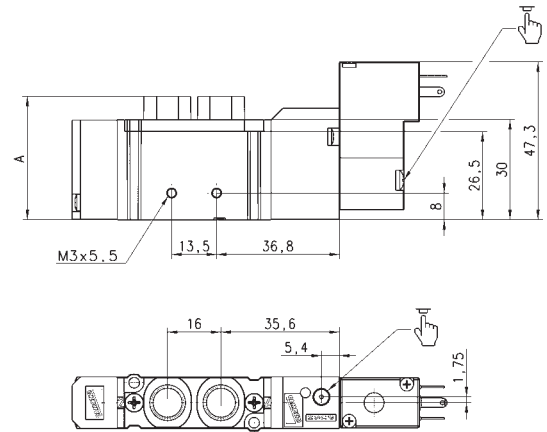
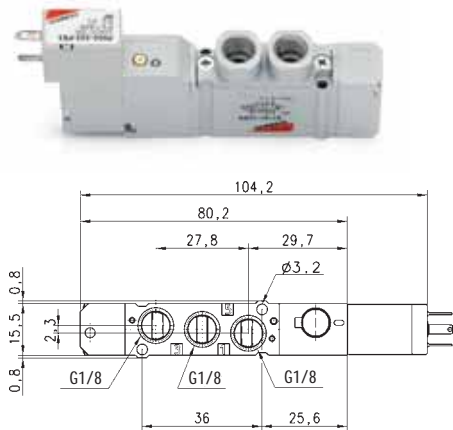
			A	Attacchi	P. es.	Portata	
				1-3-5	2-4	bar	NI/min
<b>E621-11-10-K10</b>	<b>E821-11-10-K10</b>	<b>E72C-11-10-K10</b>	29	M5	M5	2/7	200
<b>E621-11-10-K10</b>	<b>E62C-11-10-K10</b>	<b>E82C-11-10-K10</b>	37,5	M5	Ø4	2/7	200

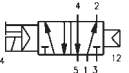


**Valvola a comando elettropneumatico monostabile - passo 16**

5/2 vie.

Per elettrovalvole con solenoide tipo P utilizzare connettore 125-800  
per elettrovalvole con solenoide tipo W utilizzare connettore 126-800  
vedi pag 2.02.005 e pag 2.03.005.

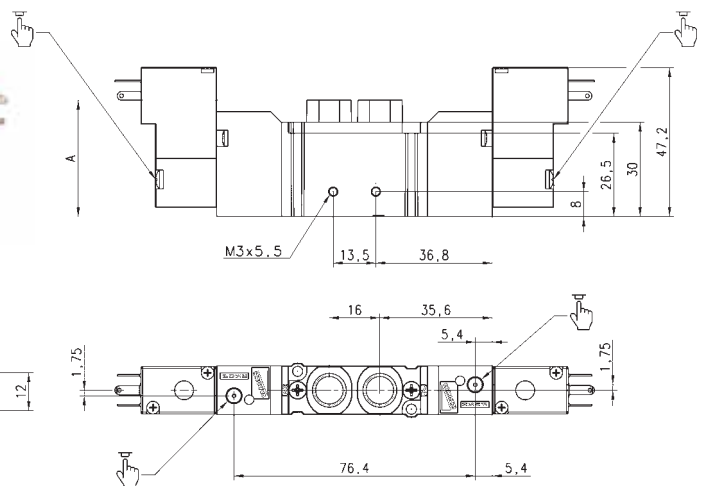
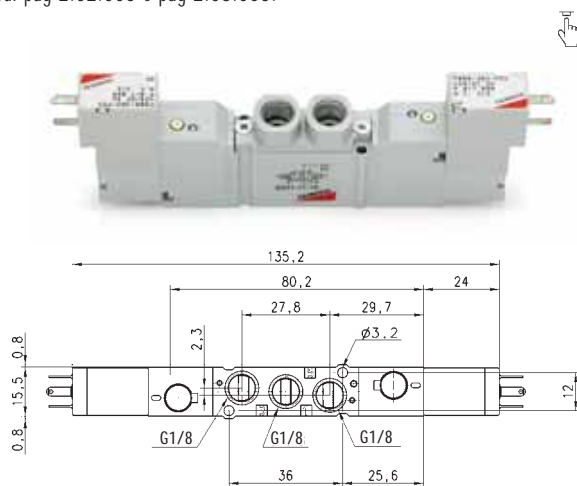
**INGOMBRI**

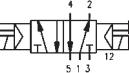
Simbolo	Mod.	A	Attacchi 1-3-5 2-4	P. es. bar	Portata NI/min
	E531-16-15-P50	37	G1/8 G1/8	2,5/7	550
	E53E-16-15-P50	43,5	G1/8 Ø6	2,5/7	550
	E53G-16-15-P50	45	G1/8 Ø8	2,5/7	550

**Valvola a comando elettropneumatico bistabile - passo 16**

5/2 vie.

Per elettrovalvole con solenoide tipo P utilizzare connettore 125-800  
per elettrovalvole con solenoide tipo W utilizzare connettore 126-800  
vedi pag 2.02.005 e pag 2.03.005.

**INGOMBRI**

Simbolo	Mod.	A	Attacchi 1-3-5 2-4	P. es. bar	Portata NI/min
	E531-11-15-P50	37	G1/8 G1/8	2/7	550
	E53E-11-15-P50	43,5	G1/8 Ø6	2/7	550
	E53G-11-15-P50	45	G1/8 Ø8	2/7	550

**Valvola a comando elettropneumatico - passo 16**

5/2 vie,

C.C. = Centri chiusi

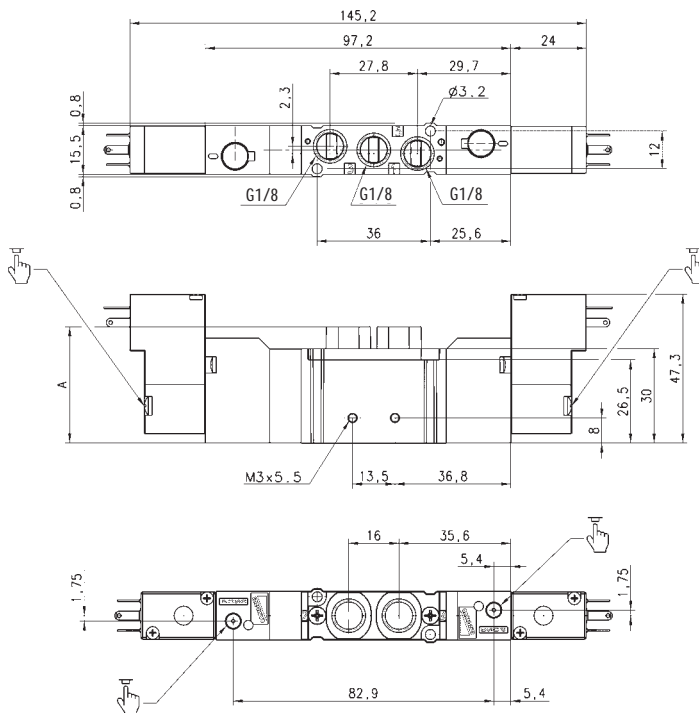
C.A. = Centri aperti

C.P. = Centri in pressione

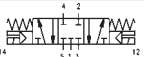

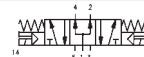
Per elettrovavole con solenoide tipo P utilizzare connettore 125-800

per elettrovalvole con solenoide tipo W utilizzare connettore 126-800

vedi pag 2.02.005 e pag 2.03.005.



**INGOMBRI**

			A	Attacchi	P. es.	Portata	
E63*-11-15-P50	E73*-11-15-P50	E83*-11-15-P50		1-3-5	2-4	bar	NI/min
<b>E631-11-15-P50</b>	<b>E731-11-15-P50</b>	<b>E821-11-15-P50</b>	37	G1/8	G1/8	3/7	550
<b>E63E-11-15-P50</b>	<b>E73E-11-15-P50</b>	<b>E82E-11-15-P50</b>	43,5	G1/8	Ø6	3/7	550
<b>E63G-11-15-P50</b>	<b>E73G-11-15-P50</b>	<b>E82G-11-15-P50</b>	45	G1/8	Ø8	3/7	550

ELETTROVALVOLE E VALVOLE

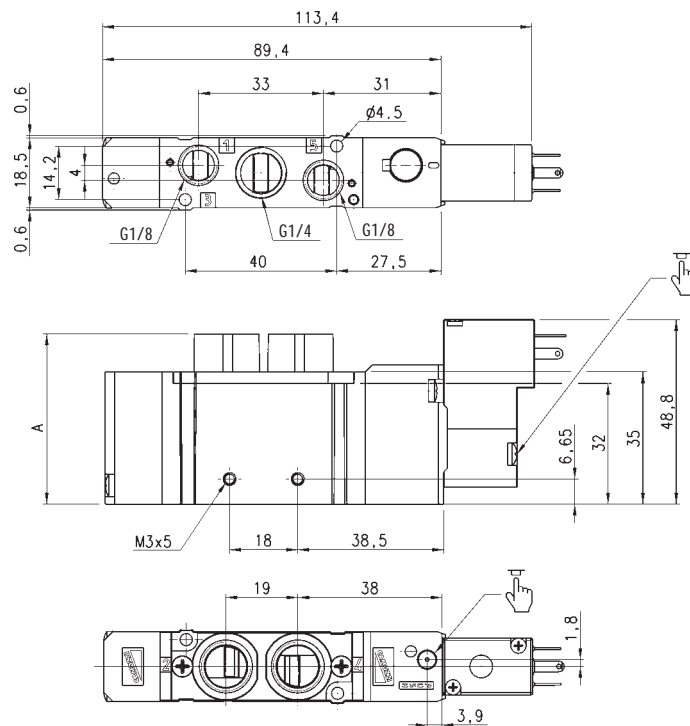
**Valvola a comando elettropneumatico monostabile - passo 19**

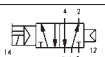
5/2 vie.

Per elettrovalvole con solenoide tipo P utilizzare connettore 125-800

per elettrovalvole con solenoide tipo W utilizzare connettore 126-800

vedi pag 2.02.005 e pag 2.03.005.

**INGOMBRI**

Simbolo	Mod.	A	Attacchi			P. es. bar	Portata NI/min
			1	3-5	2-4		
	<b>E551-16-15-P50</b>	45	G1/4	G1/8	G1/4	2/7	920
	<b>E55K-16-15-P50</b>	53	G1/4	G1/8	Ø10	2/7	920

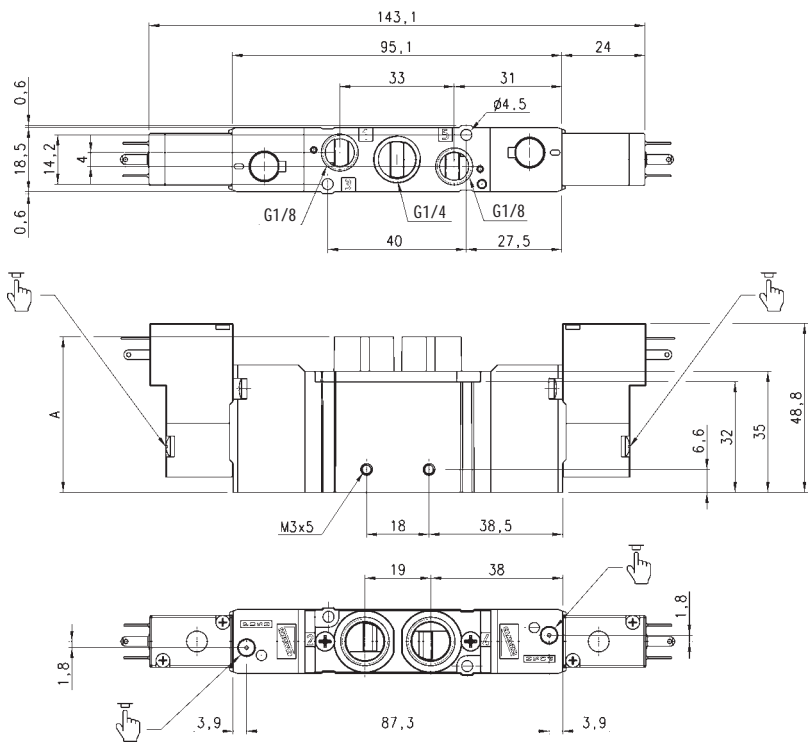
**Valvola a comando elettropneumatico bistabile - passo 19**

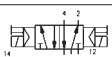
5/2 vie.

Per elettrovalvole con solenoide tipo P utilizzare connettore 125-800

per elettrovalvole con solenoide tipo W utilizzare connettore 126-800

vedi pag 2.02.005 e pag 2.03.005.



INGOMBRI							
Simbolo	Mod.	A	Attacchi			P. es. bar	Portata NI/min
			1	3-5	2-4		
	<b>E551-11-15-P50</b>	45	G1/4	G1/8	G1/4	1/7	920
	<b>E55K-11-15-P50</b>	53	G1/4	G1/8	Ø10	1/7	920

ELETTROVALVOLE E VALVOLE

**Valvola a comando elettropneumatico - passo 19**

5/2 vie,

C.C. = Centri chiusi

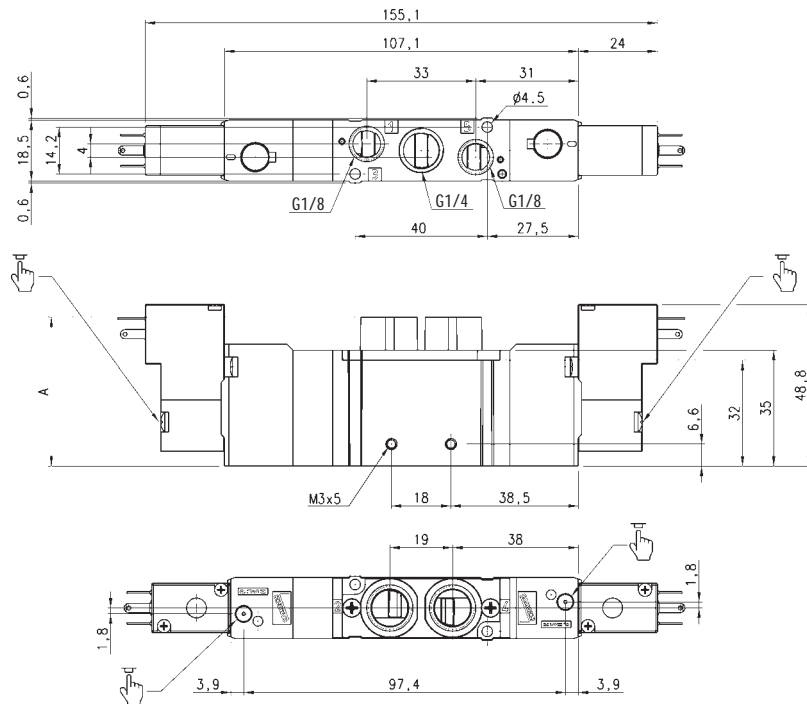
C.A. = Centri aperti

C.P. = Centri in pressione

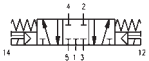


Per elettrovalvole con solenoide tipo P utilizzare connettore 125-800

per elettrovalvole con solenoide tipo W utilizzare connettore 126-800

vedi pag 2.02.005 e pag 2.03.005.



**INGOMBRI**

				A	Attacchi	P. es. bar	Portata NI/min
E651-11-15-P50	E751-11-15-P50	E851-11-15-P50		45	G1/4 G1/8 G1/4	2/7	920
E65K-11-15-P50	E75K-11-15-P50	E85K-11-15-P50		53	G1/4 G1/8 Ø10	2/7	920